

GENTRY

HOME

JANUARY/FEBRUARY 2019



ID: 37692

11'6" x 16'10"
PERSIAN YAZD

ID: 37547

8'3" x 9'11"
MALAYER



The ultimate source for the most successful interior designers and individual collectors



ID: 36479

9' x 12'
SPANISH CARPET

ID: 35362

9'5" x 11'6"
MAHAL

353 University Ave
Palo Alto, CA 94301

(800) 300-7847
www.medallionrug.com

Monday through Saturday
Closed on Sunday

CONTENTS

JANUARY/FEBRUARY 2019

114

EDITOR'S NOTE

Fresh Ideas

116

INSPIRATIONS

Runway trends inform today's best furnishings and accessories. *Gentry Home's* Emily Heitmann reports.

124

SINGULAR SENSATIONS

Virtuoso furnishings, accessories, and floor and wall-coverings

132

DESIGN INTERVIEW

A soft bedroom comes to life with a sophisticated makeover.

136

DESIGN NOTES

Scenes from *GENTRY HOME's* Design Excellence Awards 2018 at 181 Fremont in San Francisco.

140

SIMPLICITY OF LINE

Award-winning architects Swatt | Miers conjure a private Silicon Valley residence that embodies effortless elegance.

146

VALLEY CLASSIC

Mark De Mattei of De Mattei Construction breathes new life into a historic Queen Anne Revival-style residence in the heart of Silicon Valley.

160

24 HOURS WITH . . .

Interior designers Connie Heaton and Laura Williams Ulum of Heaton + Williams

ON THE COVER:

A crisp, contemporary residence in Silicon Valley by the architectural firm Swatt | Miers. Photography by Russell Abraham.

PHOTO: RUSSELL ABRAHAM




SCANDIA
H O M E

Discover The Scandia Down Difference

HEIRLOOM QUALITY DOWN COMFORTERS & PILLOWS EUROPEAN BED & BATH LINENS

Palo Alto
Town & Country Village
paloalto@scandiahome.com

Beverly Hills
322 N. Beverly Drive
beverlyhills@scandiahome.com

 Follow us @scandiahome
scandiahome.com



Founder/Executive Editor ELSIE FLORIANI

President/Editorial Director STEFANIE LINGLE BEASLEY

Art Director LISA DURÌ COSTANTINI

Creative Services Manager MICHAEL KANEMURA

Senior Editor/Marketing Strategist JENNIFER MASSONI PARDINI

Senior Editor/Director Special Projects CORY COOK

Chief Photographer JACK HUTCHESON

Senior Editor ROBIN HINDERY

Associate Editors BRIAN DOUGLAS / AMALIA MCGIBBON

Style Editor EMILY HEITMANN

Contributing Photographers RUSSELL ABRAHAM / DEAN BIRINYI / VIVIAN JOHNSON / TRISHA LEEPER

Chief Revenue Officer/Senior Vice President Sales GISELLE ANNA PARRY

Senior VP/Associate Publishers BRENDA BECK / SARA SHAW

Vice President/National Accounts NORENE SHEEHAN

Associate Publisher COLLIER C. GRANBERRY

Senior Account Executives MARILYN KALLINS / CAROLYN SCHUTZ

Chief Financial Officer DOT JUBY

Director of Operations LISA LEMUS

Distribution Management CALIFORNIA DELIVERY

Printing RR DONNELLEY

ABOUT

Gentry Home enables homeowners from San Francisco to Silicon Valley to discover the latest trends in architecture and interior design.

EDITORIAL

Please send written correspondence by mail to:

Gentry Home, Editorial Department,
873 Santa Cruz Avenue #206, Menlo Park, CA 94025.

Email correspondence can be directed to:
edit@18media.com.

ADVERTISING

For information about advertising or for a personal appointment with a sales associate, please call Lisa Lemus at 650.324.1818 x200.

ONLINE

Visit us online at www.18media.com. You can read complete editions of *Gentry Home* as well as other 18 Media publications on our website.

CIRCULATION

Gentry Home is published bimonthly and is poly-bagged and distributed with *Gentry Magazine* to nearly 30,000 homes in San Francisco, the Peninsula, and Silicon Valley.

CIRCULATION SERVICES

For questions about delivery, please call Lisa Lemus at 650.324.1818 x200, or send written correspondence to: Circulation Services, 873 Santa Cruz Avenue #206, Menlo Park, CA 94025.

SUBSCRIPTIONS, GIFTS, AND SINGLE COPIES

To purchase a one-year subscription of *Gentry Home*, please send a \$24 check, along with the proper name and address, to: Circulation Services, 873 Santa Cruz Avenue #206, Menlo Park, CA 94025. Please add \$25 per year for foreign addresses.

To send a gift of *Gentry Home*, along with your payment, name and address, please list the recipient's name and address and we will send the recipient a gift card.

If you would like to purchase a single copy of *Gentry Home*, please list the issue and month and enclose \$7 per copy ordered.

Editorial Advisory Board Lina Broydo, Barbara Campisi, Rebecca-Sen Chan, Marilyn Dorsa, Nanci Fredkin, Mary Gebhardt, Marie LoPresto, Sandy Mandel, Teresa Medearis, Brian Neel, Kelly Porter, Margo Ritter, John Thibault, Terri Tiffany, Bernard Vogel III, Tess Wallace, Jane Yates

THE *SPIRIT* OF PROJECT
VELARIA SLIDING DOORS, ZENIT WALK-IN CLOSET DESIGN G.BAVUSO

Rimadesio

RIMADESIO.COM



NIDO LIVING
2233 ALAMEDA ST. - SAN FRANCISCO
TEL 415 329 5808
NIDOSF.COM

N I D O
living

FRESH IDEAS

The way we live now. Putting this issue of *GENTRY HOME* together has been so energizing. Our features focus on two incredibly different homes that have been brought to life by some of the Bay Area's best design professionals. The common thread between the two is a laser focus on form, function, and how families live and thrive today. Both residences have been masterfully crafted to serve their owners for decades to come.

First up is a gracious remodel of a Queen Anne Revival wedding cake of a dream home in Santa Clara. This historic beauty had fallen on tough times, but through the talent and expertise of award-winning builder Mark De Mattei and his team at De Mattei Construction, the home has been reimagined for the 21st century (*Valley Classic*, page 146). Next, acclaimed architects Bob Swatt and George Miers of Swatt | Miers in Emeryville conjure a sublime piece of modernism in Atherton. The home is elegant in its refined simplicity, yet perfectly suited to a casual California lifestyle (*Simplicity of Line*, page 140).

Also, in this edition Style Editor Emily Heitmann focuses on runway trends that are crossing over to the furnishing and accessories world (*Inspirations*, page 116). We spotlight Lauren Evans and a charming recent project she completed for a very lucky little girl (*Designer to Watch*, page 132). And, we catch up with Connie Heaton and Laura Williams-Ulum, the dynamic designers behind Heaton + Williams (*24 Hours with . . .*, page 160).

We hope you'll find a lot to savor!



A handwritten signature in black ink that reads "Stefanie Lingle Beasley".

Stefanie Lingle Beasley // Editorial Director // edit@18media.com

INTERIOR LANDSCAPES

Engineered to perfection by Midland Cabinet Company
Fine custom cabinetry & millwork since 1965



For more than 50 years,
Midland has built and
designed the finest custom
cabinets and casework for
the finest homes in the
San Francisco Bay Area.
Get in touch today to learn
what we can do for you.



MIDLAND
CABINET
COMPANY

Fine Cabinetry & Millwork

www.midlandcabinet.com

719 Industrial Road, San Carlos, CA 94070
650.594.0890

INSPIRATIONS

TO DREAM * TO DISCOVER * TO LOVE

I DREAM OF BEACHY

Matthew Williamson's new DEYA COLLECTION for Osborne & Little is named after a magical village in the hills of the Balearic island of Mallorca. Williamson has a home there and his collection of embroidered and printed fabrics exude a Mediterranean lifestyle. *The collection is available at Osborne & Little, San Francisco Design Center, 415.255.8987.*



S I N C E 1 9 7 5

TILE FANTASTIC



The finest in ceramic, porcelain, stone, mosaics,
glass and metal tiles for every area of your home.

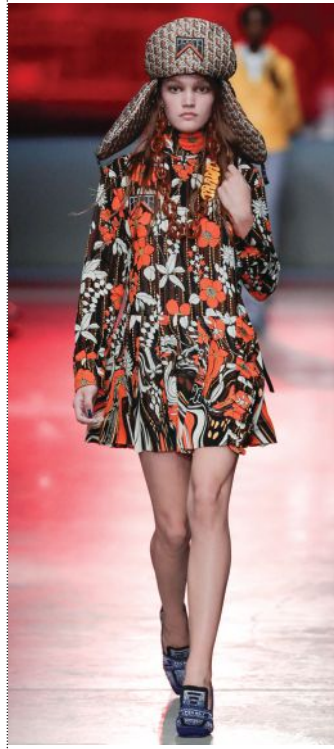
Tile Fantastic has been serving the needs of the
Bay Area's homeowners, builders, contractors
and designers for over 40 years, featuring the
finest tile products for every area of your home.

We are the South Bay's only direct dealers for
Walker Zanger, Richards & Sterling, Sonoma
Tilemakers and Oceanside Glasstile.

408.371.6247



Kate Spade Home Wild Garden Pillow (\$90). Kate Spade, Stanford Shopping Center, 650.324.3813



Prada Resort 2019



Valentino Resort 2019

A '60S REVIVAL

Groovy florals and geometric prints set the tone for the upcoming spring collections.



Essential Home Doris Armchair. www.essentialhome.eu



Marimekko Unikko teapot (\$115). Marimekko, Stanford Shopping Center, 650.353.2170.



Haute House Drum Ottoman (\$1,061). www.hautehousehome.com



Maison Numen Garofano Imola Coffee Service Set (\$1,370). www.maisonnumen.com



Lobmeyr Geometric Glass Tumbler (\$170). A. Rudin, San Francisco Design Center, 415.431.5021.

STUDIO SNAIDERO BAY AREA



snaidero
KITCHENS + DESIGN

snaiderousa®
FROM ITALY SINCE 1979

30 LIBERTY SHIP WAY ■ SUITE 3160 ■ SAUSALITO
415.332.1745 SNAIDEROKITCHENS.COM



Boca do Lobo Diamond Amethyst Sideboard. www.bocadolobo.com

Christian Siriano Resort 2019



Michael Kors Collection Resort 2019



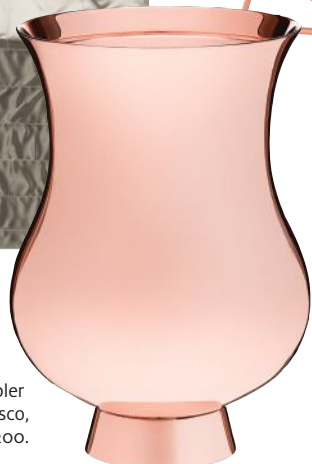
SHIMMER & SHINE

A heavy hand of metallics adds a sophisticated touch to both your ensemble and living spaces.

Designers Guild Tiber Slate and Zinc Large Quilt (\$695). Osbourne & Little, San Francisco Design Center, 415.255.8987.



Ligne Roset Falda Table by Andreas Kowalewski. Ligne Roset, San Francisco, 415.777.1030.



Puiforcat Sterling Silver Tumbler (\$2,590). Hermes, San Francisco, 415.391.7200.



ModShop Art Deco Dining Chair in Gold Speckled Cowhide (\$2,295). www.modshop1.com

ROCOCO & TAUPE

KITCHEN & BATH DESIGN - CUSTOM CABINETRY - INTERIOR DESIGN



650.308.9690
844 SANTA CRUZ AVE.
DOWNTOWN MENLO PARK
WWW.ROCOCOANDTAUPE.COM

Photo by Dennis Mayer

Dior Resort 2019



Herend Horseshoe Paperweight (\$335). www.herendusa.com.

BLACK & WHITE

Whether patterned or checked, you can never go wrong with this color combination.



Haviland Art Deco Dinner Plate (\$113). Neiman Marcus, Stanford Shopping Center, 650.329.3300.

Elyse Graham Black Magic Mirror (\$5,800). Anyon Atelier, San Francisco, 415.814.3849.



Tom Dixon Medium Terrazzo Candle (\$100).



Mitchell Black's Addition: Jet Black Reverse Wallpaper from Mrs. Paranjape Papers Collection. www.mitchellblack.com



Brenda Houston Black and White Striped Circular Bowls from Una Malan. www.unamalan.com



© 2018 Dean Birinyi Photography

COME HOME TO EXCELLENCE

At TIMELINE, we design and build houses you can't wait to come home to. Our in-house team of architects, project managers, interior designers and craftsmen work together to create a custom home renovated just for you. We focus on every detail so you can simply live and love the life you've built, in the home we've built, together.



408.357.2572 | tldesign.net

LIC# 598967



Classic Coral

Legendary interior designer Nina Campbell's latest collection of printed and embroidered fabrics and wallpapers, "*Les Indiennes*," was inspired by the 17th- and 18th-century fascination for textile designs originally produced in East India and traded via the *Compagnie des Indes*. Campbell has reinterpreted these prints in blues, aquas, teals, and rich corals, as seen here.

Campbell's latest collection of trimmings, including braids, fringes, cords, and the "Triannon Bauble" pictured here, take their inspiration from Versailles and its surrounding palaces. Campbell's witty and charming design sense makes these traditional elements feel fresh and contemporary. www.osborneandlittle.com

Helping Create Lasting, Beautiful Homes



Your local source for Architectural Stone, Paving, Landscape Stone & more.



Peninsula Building Materials Co.

MASONRY SHOWROOM 2490 Charleston Road Mountain View, CA 94043 (877) 282-0522 www.pbm1923.com

Yard Locations | Redwood City | Sunnyvale | San Martin | Livermore

Let There Be Light

From France, home of the City of Light, comes a company offering sublime luminescence. **Les Jardins Solar Lighting** pairs a sleek design aesthetic with environmentally sustainable LED bulb modules offering up to 200 hours of life per charge. Its "Skaal" lantern will illuminate even the gloomiest January evening. This chic teak piece blends both versatility and durability. The soothing mood lighting works beautifully either indoors or outside. www.lesjardins.solar



Genuinely transparent.
Optimally efficient.
Beautifully crafted.

Ground-up, custom-crafted
modernist home with expansive
San Francisco views

DESIGN LINE Construction

SAN FRANCISCO · WINE COUNTRY · PENINSULA
+ 1 415 647 1373
designlinebuilds.com

A Healthy Dose of Sunshine

Has Old Man Winter got you down? Then this colorful tabletop collection known as “*Le Belle Donne*” is the perfect antidote! Wonderfully crafted by Bay Area homeware designer Julia Berger, the limited-edition series of applied linens, painted ceramic plates, hand-blown crystal, and engraved silverware pays homage to four of history’s most iconic females: Anastasia, Cleopatra, Elisabetta (pictured here), and Julietta. www.juliab.com





GUSTAVE CARLSON DESIGN
Architecture and Interiors

2718 Ninth Street Studio No. 2, Berkeley, California 94710 | 510.524.5181 | www.gustavecarlsondesign.com



Personally Yours

Designer William Yeoward's "Nantes" dining chair is bench-made by hand in England. Each frame is constructed of sustainable European hardwood with dowelled screwed and glued joints. The interiors are traditionally hand webbed and sprung using British products and fillings. Where appropriate, legs are polished and finished with handmade castors and individually nail-head trimmed. Clients select the finish of the legs. The chair is then upholstered in the custom-made fabric of the client's choosing. www.williamyeoward.com

Expect Excellence



Building dream homes since 1985

De Mattei
Construction Inc.


GENERAL CONTRACTOR
Building Relationships



PHOTO: VIVIAN JOHNSON

DESIGNER TO WATCH: LAUREN EVANS

A soft bedroom comes to life with a sophisticated makeover.

Lauren Evans is hard at work juggling multiple projects on the Peninsula and in San Francisco. "It's a very busy time," says the designer, "but an exciting one." Evans has become a go-to resource for a host of Bay Area families looking to upgrade their interiors with Evans' help and impeccable eye for detail. *Gentry Home* caught up with the designer to discuss color, function, and fun.

How did this project begin?

This wonderful space belongs to a little girl named Delaney. She's 7 now, but has very sophisticated tastes. She had a list of musts that included the color blue, lots of storage, and a pin board.

What inspired your design?

I took my cues from a Galbraith and Paul wallpaper. I love their ability to have a feminine motif, but masculine colors can be added to it and they do custom colors! So I was able to match Delaney's adjoining blue bathroom tile and completely hand pick my exact desired custom colors for the wallpaper. Instead of a simple pink, I opted for a coral shade that seemed fresh and just a little more grown up. To layer the colors, I added two tones of blue paint to the walls without wallpaper and a crisp white chair rail.

Special touches?

I wanted this room to be sweet, but somewhere a teen could eventually hang out, too. It was important for the space to be practical, a place where homework could be done, books and clothing and other things could be organized and stored. We also created →

**YOUR ROOM WILL LOOK AND FUNCTION
BETTER THAN YOU CAN IMAGINE!**



HOME OFFICES
WALL BEDS
MEDIA CENTERS
CLOSETS
WARDROBES
GARAGES & MORE



VALET

CUSTOM CABINETS & CLOSETS

VALETCUSTOM.COM



READ OUR 5-STAR REVIEWS ON YELP!

CAMPBELL 1190 Dell Avenue **408.370.1041**

DANVILLE 602 Sycamore Valley Road W. **925.362.8838**

LICENSE #782217 • SINCE 1973

EXCEPTIONALLY DESIGNED • EXPERTLY CRAFTED • DELIVERED WITH 5-STAR EXECUTION



a space where she can “swing-out” and chat with friends. I’m a sucker for custom-tailored bedding. I love layering patterns as well as finding a way to personalize the space, hence the monogrammed pillow! The custom details like the coral-trimmed lampshades, pom-pom trim on the window coverings, and wallpapered magnet board helped make the space more playful.

What’s your favorite aspect of the finished project?

I am very happy that it’s not a typical kid’s room. It’s feminine and sweet, but in a sophisticated way. It’s very easy to see that my client will be able to grow with the space. The built-ins were a must to give her the functionality she needed. I have three kids myself and understand how important it is to have plenty of space to store everything! ♦



PHOTOS: VIVIAN JOHNSON



MTM BUILDING GROUP

1610 Dell Avenue, Suite D, Campbell | 408.448.4068 | www.mtmbuildinggroup.com

Silicon Valley Design Builder, **Michael Mangano**, has 37 years of professional experience in the building industry. After owning several construction and consulting companies, Michael created MTM Building Group with the vision of creating new standards in the residential construction market by designing and building homes that give families thoughtful, functional, and unique modern designs.

Michael noticed there was a growing need for experienced custom home builders for hillside and view lots,

which was his expertise, so he went to work to help clients realize their dream custom home without the time and cost delays that arise for most complicated hillside projects. He also creates “Build to Suit” opportunities for future homeowners.

MTM Building Group is known for their unique proprietary process, which is the reason why MTM Building Group can run multiple projects efficiently and effectively, on time and within budget. Find out their secrets...



CELEBRATING DESIGN EXCELLENCE

The **GENTRY HOME DESIGN EXCELLENCE AWARDS** took place on the Sky Lounge level at the stunning **181 FREMONT BUILDING** in San Francisco in November.

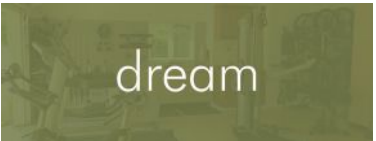


A collection of the Bay Area's top interior design firms, architecture firms, and landscape architecture firms was fêted at an elegant awards presentation. Photos of the winning projects appeared in the November/December issue of *GENTRY HOME*.



The event took place at 181 Fremont —considered the most luxurious expression of living that San Francisco has ever seen. Starting at 500 feet in the sky, the 181Fremont residences are unparalleled →





Who says your garage is just for parking cars? With real estate prices soaring, our clients are taking advantage of every square foot their garage has to offer. Are you? Our experienced team can transform your garage into that **Man, Kid or Mom Cave, Craft Room, Exercise Room** or a great place to park your cars with lots of storage.

Garage Solutions | Live Well Organized.

Contact us to start your garage transformation today.
800.755.7704
www.garagesolutions.com

CA License: 722005



garage solutions
Calm. Cool. Very Collected.



in design and finishes, views, privacy, security, amenities, and service. The building's designer, Orlando Diaz-Azcuy of ODADA design firm, related, "To enter the lobby of this building is like walking into a living sculpture."



Guests at the event had the exclusive opportunity to view the building's resplendent interiors, designed by ODADA, and a Kendall Wilkinson-designed half-floor penthouse featuring sweeping views of the San Francisco cityscape and beyond from 700 feet up.



This evening was made even more special with gourmet bites from ALX Gastropub in San Francisco and Recchiuti Chocolates. JCB poured champagne while Woodside Vineyards and O'Brien Estate Winery poured special vintages for the discerning crowd.



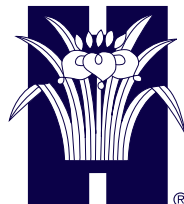
The 2019 GENTRY HOME DESIGN EXCELLENCE AWARDS will take place at Riggs Sub-Zero Wolf in Burlingame on November 6. Mark your calendars!

For details on the 2019 GENTRY HOME DESIGN EXCELLENCE AWARDS competition, email edit@18media.com.





Residential Design and Remodeling Certified Aging in Place Specialists Landscape and Outdoor Kitchen Design



Harrell Remodeling, Inc.
Design+Build

Women Founded. 100% Employee Owned. Client Focused.

Harrell-Remodeling.com (650) 230 2900 Design Studios in Palo Alto and Los Gatos



STORY BY STEFANIE LINGLE BEASLEY
ARCHITECTURE AND INTERIOR DESIGN BY
SWATT | MIERS, EMERYVILLE
LANDSCAPE BY LANDSTUDIO
PHOTOGRAPHY BY RUSSELL ABRAHAM





SIMPLICITY OF LINE



Award-winning architects Swatt | Miers
conjure a private Silicon Valley residence that
embodies effortless elegance.





They've done it again. The team from Swatt | Miers has been on a veritable roll for the past 20 years crafting homes and commercial buildings that express a crisp, contemporary point of view that places the utmost value on beauty, sustainability, and user responsiveness. The wonderful private home on these pages is a prime example of what this firm does so well.

Notes Bob Swatt, "Our clients discovered this property in Atherton with marvelous mature trees and brought us in to rethink the site and create a forever home. They are young, with children, and wanted an informal space that would suit their lifestyle and maximize indoor/outdoor flow." To that end, the architects designed an L-shaped structure with the short leg of the L facing west and the long side of the L running east to west. The shape of the structure and its placement on the property allows for spectacular green space that can be accessed from every room on the ground floor. The grounds were beautifully designed by landscape architect Bernard Trainor of Landstudio and include a pool, sport court, and planting beds. "The patio areas have these incredibly long horizontal extensions that are topped with sleek aluminum trellises," says Swatt. "The interplay of shadow and dappled light from them throughout the day is marvelous."

A peaceful water feature leads to the home's front door. Once inside, a dramatic wall of INAX ceramic tile from Japan offers striking texture. "The home's single vertical element," shares Swatt, "is the striking stairwell that features a stack of windows along the far corner and elegant glass railings to maximize light." The top floor includes a series of bedrooms with en-suite Jack-and-Jill baths with garden views, while the lower level features a wine cellar and gym.

An extraordinary highly polished concrete floor that more closely resembles stone was expertly poured to run the length of the main level through the living room, office, kitchen, and dining room. "At first," notes Swatt, "the home owner did not want a formal dining room—keeping everything casual was key to them. But as the design process continued, they realized that in the future, it might be something they would consider, so we

Fresh, contemporary, and casual were the guiding ideas behind the design in this Silicon Valley home. The team at Swatt | Miers kept the lines of the home crisp and simple, allowing wonderful flow between the interiors and spacious garden beyond.





The color scheme in the home is neutral, allowing a few bold punches of art work and rich texture to shine. The master bedroom opposite features a wrap around deck with views of the garden.

created a very flexible space with 15-and-a-half-foot ceilings that is now tasked as a play room/homework/ piano area.”

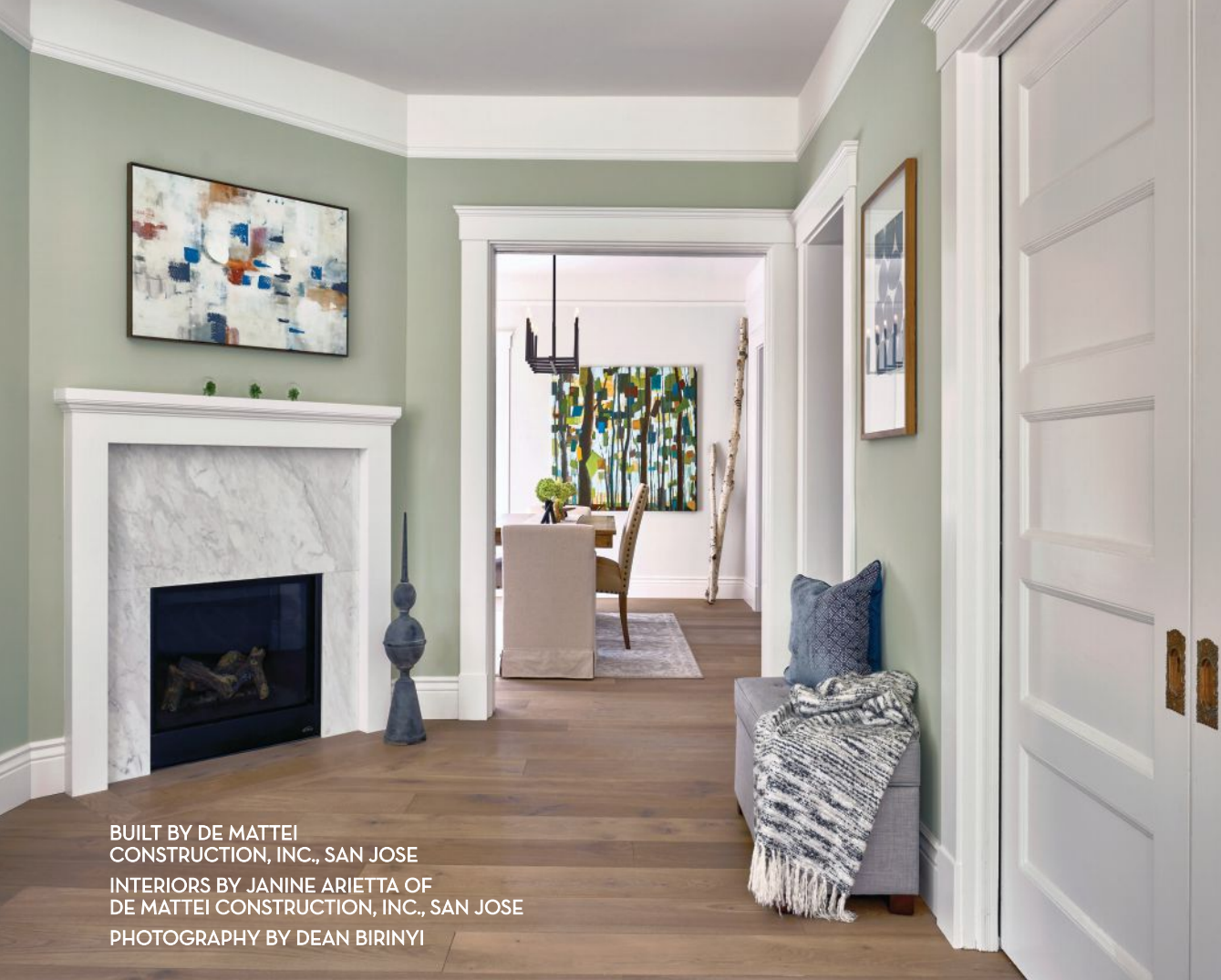
The kitchen features double islands with waterfall stone countertops that contrast with striking quarter-sawn eucalyptus cabinetry by Arclinea. Top-of-the-line appliances from Gaggenau, Miele, and Sub-Zero ensure that cooking is a dream. Interior designer Connie Wong from the Swatt | Miers team selected contemporary furnishings that emphasize the home’s clean lines; for instance, the sculptural “Big Bang” pendant by Foscarini makes an impressive statement over a large dining table, and the slim-back leather chairs are from B&B Italia.

In the living room, a low-slung sectional sofa by Minotti sourced from Aki-tekura in San Francisco provides plenty of room for entertaining. The INAX ceramic tile from the foyer is repeated on the massive hearth that includes a fireplace by Ortal. “The garden was key to this design,” says Wong, “so we purposefully selected a restrained color palette, allowing the seasonal colors of the garden to play their pivotal role.”

When asked about his favorite aspect of this finished project, architect Robert Swatt reflects, “I think it lives well. I like the simplicity—it’s quiet and elegant, working in harmony with the site.” ♦







BUILT BY DE MATTEI
CONSTRUCTION, INC., SAN JOSE
INTERIORS BY JANINE ARIETTA OF
DE MATTEI CONSTRUCTION, INC., SAN JOSE
PHOTOGRAPHY BY DEAN BIRINYI





VALLEY CLASSIC

Award-winning builder Mark De Mattei of De Mattei Construction breathes new life into a historic Queen Anne Revival-style residence in the heart of Silicon Valley.

Award-winning builder Mark De Mattei of De Mattei Construction restored this beautiful Queen Anne Revival-style home in Santa Clara with careful attention to detail. The home's elegant historic charm and bones were preserved while simultaneously updating the entire home to fit the needs of a modern family.





“It was quite a fixer upper,” recalls Mark De Mattei. This comes from a man who understands buildings and what it takes to create them. For over 30 years he has earned the reputation for being one of the best in the business in the Bay Area—constructing over 2,000 homes in the process. When De Mattei first laid eyes on this Queen Anne Revival-style home in Santa Clara, he knew he wanted to restore it—not just to its former glory, but to something far better. He wanted to give it new life so that a 21st-century family would love it and live in it for decades to come.

The Queen Anne Revival style came to prominence in America from 1870 – 1910—the height of the Victorian Age. While Victorian architecture was rigid and regimented, the Queen Anne Revival style was far less formal with fluid lines, front-facing towers, turrets, and gables. The homes often featured wrap-around porches and large bay windows. The style was opulent, for its day, speaking to the position of its owners. This lovely home had certainly been built for someone of great means during the early days of the Santa Clara Valley, when fruit orchards were planted as far as the eye could see.



Time had taken its toll on the residence, though, and it was in need of careful restoration. “The basement and foundation were first on our list,” recalls De Mattei. “We needed to ensure that the home had strength from bottom to top, and we reworked and replaced the foundation, the roof, restored and replaced windows, created a new kitchen and baths, and replaced the landscaping.” De Mattei and his team did it all in nine months with the blessing of the local historic commission. The home is now one of the loveliest in the neighborhoods that surround the University of Santa Clara.

“The quirks of the home are truly charming,” says Janine Arrieta, interior designer for the De Mattei team. “I first saw the house when it was down to the studs.” Originally from the East Coast, Arietta says that she has a fondness for historic homes and architecture. “It was important to our team to celebrate the architecture,” she says, “but to also craft a home that would very much appeal to a modern family. Our design choices had to have a timeless appeal.” To that end, Arietta kept the palette neutral, opting for dove greys, pewters, and soft blues, all punctuated with fresh white trim. “I played a lot with texture and pattern, especially in the tile selections,” she notes. In one of the guest bathrooms, she employed a fan-shaped tile to echo the scallops of the home’s roofline. In another



guest powder room and the master bath, she added a new tile from Vardara's "Toledo" collection in a brushed salt finish.

The kitchen is a particular favorite of the De Mattei team. Gleaming quartz counters from All Natural Stone pair beautifully with the custom cabinetry. "We designed a group of cabinets to look like a hutch," notes Arietta. "We wanted them to look as if they had always been there."

The mudroom is also very special. Here, Arietta installed patterned tiles by Pan American Ceramics with an intricate motif and a Victorian feel.

The project had its challenges. "Odd shapes and small spaces," says Arietta, "were something we really had to work on—so we played with scale to keep it interesting."

Interesting, indeed—this home is definitely a testament to the hard work, dedication, craftsmanship, and formidable skills of the De Mattei team. ♦



Originally built in the late 1800s, the home features an extraordinary gabled roof, wrap-around porch, and cupola. The team from De Mattei construction rebuilt the home from top to bottom so that it will serve future families for decades to come.

PLEASE ENJOY CONNECTING WITH
THESE *GENTRY HOME* CLIENTS.

Closet Factory

650.595.9999
www.closetfactory.com

De Mattei Construction

408.350.4200
www.demattei.com

Design Line Construction

415.647.1373
www.designlinebuilds.com

Garage Solutions

800.755.7704
www.garagesolutions.com

Gustave Carlson Design

510.524.5181
www.gustavecarlson.com

Harrell Remodeling, Inc.

www.harrell-remodeling.com
650.230.2900

Masterpiece Gardens & Design

650.361.1414
www.masterpiecegarden.com

Medallion Rug Gallery

650.727.6280
www.medallionrug.com

Midland Cabinets

650.594.0890
www.midlandcabinet.com

Mother Earth Landscapes

650.400.7255
www.motherearthlandscapes.com

MTM Building Group

408.448.4068
www.mtmbuilding.com

Nido Living

415.329.5808
www.nidosf.com

Peninsula Building Materials

877.781.7125
www.pbm123.com

Rebarts Interiors

650.348.1268
www.raberts.com

Rococo & Taupe

650.308.9690
www.rococoandtaupe.com

Scandia Home

650.326.8583
www.scandiahome.com

Studio Snaidero Bay Area

415.332.1745
www.snaiderokitchens.com

Tile Fantastic

408.371.6247
www.tilefantastic.com

Timeline Design + Build

408.741.3000
www.tldesign.net

**Valet Custom Cabinets
and Closets**

408.370.1041
www.valetcustom.com



DESIGN RESOURCES 2019

Gentry HOME presents our annual compilation of outstanding design products and resources. Our homes reflect who we are and provide a place where we can feel our best. The following excellent design services and ideas will allow you to make your home as special as you are.





MIDLAND CABINET COMPANY

FINE CUSTOM CABINETRY FROM MIDLAND: WE BRING YOUR STYLE TO LIFE

Custom cabinetry and architectural millwork are the hallmarks of fine interior styling, which is why Northern California homeowners, architects, and designers trust Midland Cabinet Company to turn their design concepts for fine living into reality.

Founded in 1965, still family-owned and family-run, our 50-plus years of experience count when it comes to delivering what customers expect: precision detailing. Our reputation for expert product delivery and service lies in our hands-on approach, extending from the cabinetry we fabricate in our local San Carlos facility to the care we take to communicate with clients throughout the project.

Building and installing the finest products is our sole focus, and we ensure the end result by calling on the best domestic and exotic wood, the highest-quality American and European hardware, and the latest innovations in cabinetry engineering, finishes, and glazes. With a staff of master craftsmen working on the industry's top-of-the-line computerized machinery, we can guarantee that Midland's passion for quality shows in the final product, inside and out.

Visit us at MidlandCabinet.com, or come by for a tour of our showroom and fabrication facility.

*Best wishes for 2019,
Rob, Sue, and Jeb Boynton, and the entire Midland staff*



**MIDLAND
CABINET
COMPANY**

Fine Cabinetry & Millwork

719 Industrial Road, San Carlos • 650.594.0890

www.MidlandCabinet.com



Photography: Rusty Reniers





REBARTS INTERIORS

Bart and Becky San Diego are the proud and proficient owners of Rebarts Interiors who share 30 years of outstanding professional experience. At Rebarts Interiors, they work closely with you in creating the finest custom window fashions, from a residential setting to a large commercial project, from the consultation to the installation, and to make sure that no detail is overlooked.

Rebarts Interiors designs beautiful shutters, blinds and draperies that come in many styles, colors, and textures. They have three gallery showrooms. The main showroom office is in Burlingame with a branch in San Carlos and Los Altos to better and more conveniently serve you.

Rebarts Interiors is a certified Hunter Douglas Gallery Centurion exclusively previewing all the latest and newest products before any other dealer. They custom-fit window fashion treatments to any shape and size, offering a complimentary in-home design consultation with measuring services. They also work with an extremely talented group of in-house design consultants, as well as a network of outside designers, decorators, architects, developers, and realtors.

Rebarts Interiors celebrates over 30 years of business. Their commitment and their goal is to develop a working relationship with the client in making their window fashion vision become a reality, from the beginning stages to the end.

HunterDouglas *Gallery*



1352 Broadway, Burlingame • 650.348.1268
990 Industrial Road, Suite 106, San Carlos • 650.508.8518
253 State Street, Los Altos • 650.288.4377
www.rebarts.com





CLOSET FACTORY

BRINGING MORE ORDER AND BEAUTY TO YOUR LIFE.

Y our storage problem is unique, and no closet company is better fit to help you organize your life than Closet Factory. We understand every closet system is custom, made to order, your order. It's the reason we've become the authority in customized storage solutions.

Our Closet Factory closet systems are not your typical closet organizers. They are designed just for you, your space, your wardrobe, your needs, and your budget. We listen carefully when you tell us what you want, and then we create a closet design that will fit your needs and space perfectly.

Closet Factory has become a leading closet company franchise in closet organizers with locations throughout the United States. This national network of closet companies and their people is dedicated to creating the best custom closet organizers possible, right down to the handles on the doors and drawers.

Whether you live in Los Angeles or New York, you will find the same high-grade closet materials, lifetime warranty, highly trained closet designers, and great workmanship that defines the Closet Factory brand. The Closet Factory has made itself into the industry standard as a closet company.

closet *f*actory

1000 B Commercial, San Carlos • 888.678.6789

www.closetfactory.com

DESIGNING WOMEN

Courtney Heaton is a second-generation designer. Her love for interiors began while working alongside her mother transforming homes in Dallas, Fort Worth, and Beaver Creek. In 2003, she launched her eponymous firm Courtney Heaton Design in San Francisco. Eleven years later, veteran designer **Laura Williams-Ulam**, whose career has been spent creating beautiful projects in Washington, D. C., Atlanta, Palo Alto, Menlo Park, and Napa Valley, joined Courtney's team. Recently, the duo decided to officially partner and rebrand the company **Heaton + Williams**. *Gentry Home* caught up with this talented team to understand the secrets to their success.



PHOTOS: THOMAS KUOEH

Courtney Heaton and Laura Williams-Ulam

Laura Williams-Ulam: 5AM Wake

up, have coffee, and check my social media—Instagram and Pinterest—then do some online sourcing for Atherton clients. **Courtney Heaton: 6AM** Grab my phone to check the time and see there are texts, Instagram messages, and emails . . . so I check it all from the comfort of my cozy bed. Then I shower and get ready for the day. **Courtney: 6:30AM** Wake up my three girls and help them get ready for the day—they wear uniforms, so that helps! I make myself some tea because everyone knows I'm a lot nicer after I've had my tea! **Courtney & Laura: 7AM** Ready for the day and conference call with each other about our Healdsburg project. Today, we are finalizing finishes for the

kitchen and baths. Loving the tile samples from Heath Ceramics! **Courtney: 8AM** I drop the girls off at school and now I'm off to check on progress on a Victorian remodel we are working on in the city. Thankfully, we have the best contractor and he has everything under control. I show my client furniture plans for her living room—a beautiful sectional sofa, two swivel chairs in a great Anna French fabric, and a large rug from HD Buttercup to ground the space. We're off to a good start. **Laura: 8:30AM** Stopping by our Napa project for a quick site visit. Hardwood floors are going in today. **Courtney: 10AM** I need to source a rug for a client in Los Gatos, so I stop at Krimsa and find a few options along with a few pillows that are perfect for another project! **Courtney & Laura: 11AM** Lunch at the new Marlow Cow Hollow as we go over our meetings for the day, and decide which fabrics to show our client in Atherton. We review some great options from Well Made Home—one of our favorite resources. **Courtney: 1PM** Arrive in Atherton for the delivery of dining room furniture. The room has been lacquered, the chandelier was hung, and now the table and chairs complete this beautiful dining room for the holidays. This is what makes our job so much fun! We run by another client in the area to show her some art to complete her living room; we really enjoy the finishing touches. **Laura: 1:30PM** Arrive in Atherton for delivery of furniture. This is so fun to see the finished product! Make a few quick decisions on the fabric for pillows and shades and we're off to our second client close by. New coffee table came in and we can't wait to see it! **Courtney: 3PM** Head back to the city to get my girls. We don't have any activities today, so we get a snack and get started on homework. I open my laptop and follow up on emails and place a few orders. **Laura: 3PM** On my way back to Napa, stop in the city to see the new Hewn showroom and meet with them about the new fabric lines they are carrying. **Courtney: 5PM** We walk the dog to the park and enjoy a little fresh air. **Laura: 5PM** Time to brave the traffic! Always a long drive in the evenings back to the Napa Valley! **Laura: 6:30PM** Arrive home. Time for dinner at R&D Yountville with friends. Seems to be a regular event! **Courtney: 7PM** Dinner, bedtime reading, and tuck in. **Courtney: 9PM** It's been a long day. I trade in my iced-tea for a margarita, and my husband and I chat about our flip project in the wine country. Then we settle in for some nighttime TV. *Shameless* is the show for tonight. **Laura: 9PM** Crash on the sofa for a little HGTV and Bravo. Always sourcing online while I'm watching my shows! Try to stay awake, but usually out by 10. At the end of a long day, I'm so happy to be doing something I love!

Courtney: 10:30PM Time for bed!



25 YEARS OF EXPERIENCE MANAGING LARGE ESTATE GARDENS IN THE BAY AREA



Masterpiece is an award-winning Bay Area Garden Landscape design-build firm that provides a wide range of superior services for the more discerning clientele in the San Francisco Bay Area.

WE GO BEYOND THE LAWN

providing the expertise of proper pruning, fertilization, watering, mulching, landscape design, flower/bulb planting, and garden consultation.

We service communities throughout the Bay Area including:

Atherton • Los Altos Hills • Hillsborough
Monte Sereno • Portola Valley • Woodside
Los Altos • Palo Alto • Burlingame
Menlo Park • Los Gatos • San Mateo
San Francisco • Berkeley • Kensington
Corte Madera • Tiburon • Mill Valley

Masterpiece
Gardens & Design

WE ALSO OFFER WEEKLY, MONTHLY, AND QUARTERLY MAINTENANCE PROGRAMS.

650.361.1414 | www.masterpiecegarden.com | info@masterpiecegarden.com | CA Lic. #696959



Mother Earth
landscapes

Holistic Landscaping

After almost three decades in the SF Bay Area providing quality landscaping and gardening, we have started a company to provide "holistic" landscaping.

All Organic. All Electric. No gasoline.

Ask us about our incredible organic fertilization program instead of the traditional synthetic man-made fertilizers.

Everything we use is safer for our children, pets, and of course our plants.

Call today for a free consultation.

650.400.7255
motherearthlandscapes.com